



The Gryphon School

2016 Summary Examination Report – September 2016

Key Summary at A level

- Pass rates are similar to last year and above national. Attainment is very good.
- Overall progress /VA is ALPs 4– Very Good; L3VA is expected to be similar to last year and just above zero.
- Most subject performance is very good; only small variability across subjects; vocational performance returned to good levels
- The percentage of students gaining places at their choice university remains very high around 96%
- 145 UCAS applications – 122 from Year 13 and 23 from previous students – the highest ever
- 2015-16 saw a temporary sixth form leadership structure following the late resignation of previous Head of Sixth Form. The team did everything possible to support students.
- We are proud of the performance particularly in the context of the challenges including the first year of new AL/AS courses and tougher examinations with lower pass rates nationally

Focus for 2016-17

- Future AL Curriculum design – to consider number of ALs taken, AS offer, examination entries, breadth of level 3 courses despite the economics of running courses, maximising performance, non-qualification activity, employability, work experience
- 2015-16 was the first phase of new AL courses with the AS becoming a standalone qualification which does not count towards the final AL grade. There is a mixed economy of course types until all new specifications come on stream in 2017.
- Raising the academic challenge of teaching including higher order skills, challenge, vocab, expression, interpretation of new grade band criteria and preparation for linear examinations
- New Head of Sixth Form starting in September 2016

Other Sixth Form Development Areas

- Tracking non qualification activity
- Developing enhanced leadership employability skills – link to promotion of learning muscles
- Work experience in place all vocational courses inc new applied ALs; Other work experience must be available / signposted
- Revised recruitment programme with additional opportunities for students and parents to experience the Sixth Form
- Preparation for new Cambridge admission tests

Key Summary at GCSE

- Very good overall – considerable amount of support from the Year team and intervention
- Nationally pass rates fell and we had the context of 27 new teachers and leadership changes
- Progress 8 measure is good at +0.10 but lower than the +0.40 in 2015
- Attainment 8 is high at 54.39 up from 54.15 in 2015
- Basics A*-C in both English and Maths was 71.1% compared to 72.6 in 2015
- The proportion of students gaining five or more A* to C grades including English and Maths was 70%
- Almost a quarter of grades were A* or an A; progress for the more able is good; 32 students achieved 8 or more A* or A grades. Two students gained 13 A* grades and four other students each achieved 10 A* grades.
- The A*-C pass rate in Mathematics was the highest in Dorset for the last 2 years at 82% and this has been achieved for the third consecutive year – it compares to 61% nationally. Levels of progress in maths are good.
- The A*-C pass rate in best English (Lang or Lit) increased to 78% compared to 60% nationally. Levels of progress improved. Separate Language and Literature are lower.
- The gap between the attainment of FSM and non-FSM students for 5+A*-C with EM was 15 compared to 10 in 2015. The gap in levels of progress in English and Maths is small.
- The attainment and progress of SEND students and L3 starters increased and was above targets.
- Virtually all subjects saw very good or better results. The results in the traditional subjects of the Sciences - Biology, Chemistry and Physics - English, Art, Drama, Music, Geography, Sport, Business Economics and Mathematics are very strong.

Focus for 2016-17

- New GCSE courses for English and Mathematics to be examined for the first time this year with a new 9-1 grading scale.
- Preparation of students for longer linear tougher examinations
- Ensure all teachers are retuning their teaching to the new expectations, new assessment criteria, new specifications, new examinations.....cannot keep teaching the same
- Focus on specific subjects, areas within subjects and any individuals
- The intervention and support for FSM students will continue to be a priority for all staff.
- Continue to develop iLearn learning resources including shared department resources
- Close tracking of students in alternative provision off site

A Level Detail

The A Level results are very good and the pass rates are above national averages. This is particularly notable when nationally pass rates have fallen as the national expectations have risen and the examinations made tougher. **There were 189 students sitting A2 examinations.**

The pass rates are very similar to 2015 when the progress rates were excellent. Most of our students take the “traditional” academic A levels. These results show:

- 8.2% of exams achieved the A* grade
- 27% of exams taken were awarded an A or A* grade. In 2015 the national figure fell slightly to 25.9%.
- 54% of exams taken were awarded an A*-B grades
- 79% of exams taken were awarded an A*-C grade
- Over 99% achieve at least a pass grade
- Four students gained places at the University of Cambridge or Oxford
- 40% of the university places are at highly prized Russell Group Universities including in University Schools of Medicine
- 9 students applied to Oxbridge, 7 were interviewed, 4 gained conditional offers – 3 achieved places

	Entries	Average points score per student	Average points score per entry	Pass rate A*-E	National Pass rate A*-E	Pass rate A*/A	National Pass rate A*/A	Pass rate A*-B	Pass rate A*-C
2012 All	193	738	215	98.3	98	30 (10%A*)	26.6 (7.9%A*)	53	77
2013 Academic	186	804	226	99.8	98.1	34 (11% A*)	26.3 (7.6%)	62	85
2013 All	186			99.8		36 (10% A*)		63	85
2014 Academic	191	778	221	99.2	98	29 (8% A*)	26 (8.2%)	55	79
2014 All	191			99.3		31 (7% A*)		55	78
2015 Academic	197			99.1	98.1	29 (10% A*)	25.9 (8.2%)	54	82
2015 All	197	761	219	99.1		29 (9.5% A*)		53	81
2016	189 AL 178 Voc 12	AL 124 Voc 109	AL 35 C+ Voc 36 D	99.8	98.1	30 (8.2% A*)	25.8 (8.1%)	54	79

Scoring system is new from 2016

AL Grade	U	E	D	C	B	A	A*
Score	0	10	20	30	40	50	60

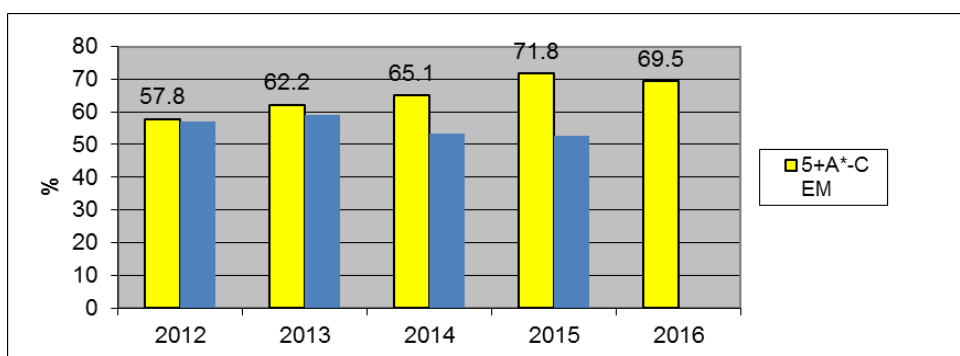
Qualification Name	A*-A%	A*-B%	A*-C%	A*-E %	A*	A	B	C	D	E	U	Entries
Art A2	15.2	51.5	93.9	100	4	1	12	14	2	0	0	33
Biology A2	24.4	51.2	68.3	100	7	3	11	7	9	4	0	41
BTEC Applied Science A2	44.4	44.4	44.4	100	0	4	0	0	3	2	0	9
BTEC Health and Social Care A2	60	60	80	100	0	3	0	1	1	0	0	5
BTEC ICT Practitioners A2	100	100	100	100	0	2	0	0	0	0	0	2
BTEC Sport (Single) A2	71.4	71.4	71.4	100	0	5	0	0	2	0	0	7
BTEC Travel A2	22.2	22.2	44.4	100	0	2	0	2	3	2	0	9
Business Applied (Single) A2	18.8	31.3	62.5	100	1	5	4	10	8	4	0	32
Chemistry A2	33.3	53.3	86.7	93.3	1	4	3	5	1	0	1	15
Classics (Ancient History) A2	0	41.7	75	100	0	0	5	4	2	1	0	12
Design and Technology (product) A2	50	75	75	100	0	2	1	0	1	0	0	4
Economics A2	93.3	100	100	100	5	9	1	0	0	0	0	15
English Language & Literature A2	20	30	63.3	100	2	4	3	10	11	0	0	30
English Literature A2	37.5	79.2	95.8	100	3	6	10	4	1	0	0	24
Extended Project Qualification AS	65.2	82.6	91.3	95.7	22	8	8	4	2	0	0	46
Food and Nutrition A2	0	25	50	100	0	0	1	1	1	1	0	4
French A2	66.7	66.7	100	100	1	1	0	1	0	0	0	3
Further Mathematics A2	42.9	85.7	85.7	100	2	1	3	0	1	0	0	7
Geography A2	24	48	76	96	2	4	6	7	3	2	1	25
German A2	33.3	100	100	100	0	1	2	0	0	0	0	3
History A2	17	55.3	91.5	100	1	7	18	17	3	1	0	47
Information Technology A2	0	0	45.5	81.8	0	0	0	5	3	1	2	11
Law A2	33.3	50	100	100	1	1	1	3	0	0	0	6
Mathematics A2	50	67.9	75	96.4	5	9	5	2	4	2	1	28
Media Studies A2	4.5	40.9	68.2	100	0	1	8	6	6	1	0	22
Modern Foreign Language A2	100	100	100	100	0	1	0	0	0	0	0	1
Music A2	0	16.7	100	100	0	0	1	5	0	0	0	6
Photography A2	17.6	52.9	88.2	100	5	1	12	12	4	0	0	34
Physics A2	37.5	56.3	81.3	100	0	6	3	4	2	1	0	16
Psychology A2	23.9	47.8	71.7	100	1	10	11	11	11	2	0	46
Religious Education A2	28.6	64.3	78.6	100	0	4	5	2	3	0	0	14
Spanish A2	33.3	66.7	83.3	100	2	0	2	1	1	0	0	6
Sport Studies A2	40	60	70	100	1	3	2	1	1	2	0	10
Theatre Studies A2	7.1	21.4	64.3	100	0	1	2	6	4	1	0	14
Summary	29.8	53.7	78.4	98.8	66	109	140	145	93	27	5	587

GCSE - Key Stage 4 - Detail

The 2016 GCSE results are once again excellent against a national backdrop of tougher exams and significantly lower pass rates in many subjects. There are some spectacular individual results from students of all abilities with standards significantly above national levels.

- 75% of exams taken achieved A*-C grades compared to 66.9% nationally.
- The proportion getting an A* or an A was 23% compared to 28% last year.
- 7.8% of exams taken achieved an A* grade compared to 9.1% last year and 6.5% nationally.
- The A*-C pass rate in Mathematics was 82% for the second consecutive year compared to 63.3% nationally. The A*-C pass rate in English increased significantly to 77% compared to 65.4% nationally.

Trends of the Percentage 5+A*-C with EM



Core Subjects – English and Maths

GCSE English results increased to 78% A*-C from 77% in 2015. This year overall English results measure the higher of English Language or English Literature**.

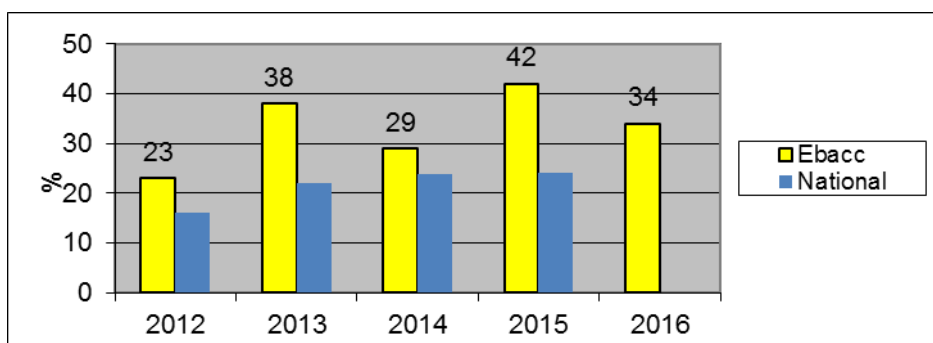
Successful approaches continued including a new iGCSE course, sharper tracking and intervention with coursework, additional PPE (mock) exams alongside the whole school intervention with key students. More than expected progress (4 and 5 levels) is significantly above national.

GCSE Maths results remained very high at 82%. School and Department strategies at GCSE continue to have a significant impact.

	3+ levels of progress	4+ levels of progress	5+ levels of progress
English 2016**	79	44	12
English 2015	75	41	10
English 2014	69	42	10
English 2013	72	46	15
National 2015	71	32 (2014)	
Maths 2016	76	32	8
Maths 2015	83	47	14
Maths 2014	78	36	7
Maths 2013	72	34	7
National 2015	68	29 (2014)	

EBacc

The percentage of students achieving the EBacc decreased. This is because a lower proportion 55% were taking eligible subjects compared to 64% last year. MFL and History pass rates are also lower.



FSM Improvement (last 4 years)

	FSM Students	5+A*-C EM School FSM	Non FSM	Eng 3LP FSM	Eng 3LP Non-FSM	Maths 3LP FSM	Maths 3LP Non-FSM	Progress 8 FSM	Progress 8 Non FSM
2013	22	36%	65%	50% Nat 56	73% Nat 74	48 Nat 54	74 Nat 76		
2014	35	41% Nat 36	70% Nat 62	43% Nat 58	74% Nat 74	61% Nat 48	78% Nat 71		
2015	24	63%	73%	79	75	79	82	+0.3	+0.43
2016	57	58%	73%	77	79.5	70	78	-0.06	+0.29

- Achieving the same level of support and intervention was always going to be a challenge with the significant growth in Y11 FSM students.
- FSM/Ever6 Students performed well. The gap between Non-FSM and FSM students for 5A*-C with EM was 15% compared to 10% last year (reduced from 33% in 2013 and 29% in 2014). The difference in Progress 8 increased from 0.16 (Non-FSM = 0.37; FSM = 0.21).
- The gap in levels of progress in English and Maths is small.

SEND groups

Performance for SEND students was improved and met targets. A new SEND strategy was implemented this year to support greater academic progress of SEND students and L3 starters.

	GCSE Result % 2015	2016 Target	2016
English 3LOP SEND	53%	50	69
Maths 3 LOP SEND	46%	50	54
English L3 starters	87%	70	76
Maths L3 starters	52%	40	52
Progress 8			-0.04
Attainment 8			31

Subjects

Qualification Name	A* %	A*-A %	A*-B %	A*-C %	A*-G %	A*	A	B	C	D	E	F	G	U	Entries
Art	10.5	21.9	64.8	99	100	11	12	45	36	1	0	0	0	0	105
Biology	8.9	48.1	81	96.2	100	7	31	26	12	3	0	0	0	0	79
BTEC Hospitality	0	0	0	20	100	0	0	0	1	1	1	2	0	0	5
BTEC ICT(Practitioners)	9.5	19	42.9	71.4	100	2	2	5	6	0	0	6	0	0	21
BTEC Sport (Single)	28.1	53.1	87.5	100	100	9	8	11	4	0	0	0	0	0	32
Business and Economics	10	46	70	86	100	5	18	12	8	5	2	0	0	0	50
Business Studies	7	19.3	28.1	54.4	100	4	7	5	15	14	7	5	0	0	57
Catering	8.5	31.9	59.6	95.7	100	4	11	13	17	2	0	0	0	0	47
Chemistry	17.7	51.9	77.2	96.2	100	14	27	20	15	3	0	0	0	0	79
Dance GCSE	0	0	20	40	100	0	0	1	1	2	1	0	0	0	5
Drama	11.8	33.3	62.7	82.4	98	6	11	15	10	7	1	0	0	0	51
English	3.9	18.6	46.3	72.3	99.6	9	34	64	60	46	13	4	0	1	231
English Language iGCSE	0	0	0	26.7	100	0	0	0	4	7	2	2	0	0	15
English Literature	5	16.1	42.1	74.4	100	12	27	63	78	47	13	2	0	0	242
Extra Languages	57.1	100	100	100	100	4	3	0	0	0	0	0	0	0	7
French	7.6	20.3	41.8	69.6	100	6	10	17	22	18	5	0	1	0	79
Further Mathematics	16.1	45.2	64.5	100	100	5	9	6	11	0	0	0	0	0	31
Geography	14.3	33.7	51	77.6	100	14	19	17	26	18	3	1	0	0	98
German	2.7	16.2	29.7	64.9	100	1	5	5	13	9	3	1	0	0	37
Health and Social Care BTEC	6	10	36	94	96	3	2	13	29	0	0	1	0	2	50
History	12.8	25	44.7	62.8	97.9	24	23	37	34	32	20	9	5	4	188
IT (OCR) 1 GCSE equivalent	8	30	70	86	100	4	11	20	8	5	2	0	0	0	50
Latin	0	16.7	33.3	58.3	100	0	2	2	3	4	0	0	1	0	12
Mathematics	6.9	21.2	38.4	82.4	99.2	17	35	42	108	23	9	7	2	2	245
Media Studies	5.9	16.2	38.2	75	100	4	7	15	25	8	7	2	0	0	68
Music	16.7	47.2	72.2	86.1	100	6	11	9	5	3	1	1	0	0	36
Physics	16.5	54.4	84.8	97.5	100	13	30	24	10	2	0	0	0	0	79
Product Design	4.2	25	41.7	58.3	95.8	1	5	4	4	6	2	0	1	1	24
Religious Education	5.3	14.6	35	57.1	97.3	12	21	46	50	34	26	20	11	5	226
Resistant Materials	0	6.3	12.5	50	100	0	2	2	12	8	2	4	2	0	32
Science - Additional Science	0.6	4.4	31.6	68.4	100	1	6	43	58	28	16	5	1	0	158
Science - Core Science	0	3.6	18.8	58.2	100	0	6	25	65	40	20	9	0	0	165
Spanish	11.1	19.4	41.7	63.9	100	4	3	8	8	11	2	0	0	0	36
Textiles Technology	30	45	70	85	100	6	3	5	3	2	1	0	0	0	20
Summary	7.8	22.9	46.2	74.8	99.4	208	401	620	761	389	159	81	24	15	2660
National 2016	6.5	20.5	41.9	66.9	98.4										